



INFO PACK
NIASSA, MOZAMBIQUE



HUNTING IN NIASA

To hunt in Niassa is to adventure in one of the last true remaining wilderness areas in Africa. The areas are vast, wild and remote - Africa at it's savage best. The opportunity to track dangerous game on foot makes this an exceptional fair chase safari. The areas plains game is varied and characterized by regional endemics.

To safari in Niassa is to go where privileged few have hunted. Hard work and the right mindset will net you not only your desired trophies but also memories to last a lifetime.

www.davelangermansafaris.com
dave@davelangermansafaris.com
+263 776 745 816





L7 / LUWIRE, NIASA SPECIAL RESERVE

This concession is the L7 block on the southern boundary of the Niassa Reserve. It is 1.1 million acres of unfenced wilderness. The area is characterized by inselbergs interspersed with miombo woodland and seasonal wetlands called pantanals, that dry up in the hunting season. 250km of Lugenda River frontage forms our Northern boundary. The Luambeze is our Eastern boundary and other operators make up our Southern and Western boundaries.

GETTING THERE

Charters into the hunting areas can be arranged by us, given 60 days notice.

Options for traveling to Pemba and on to the hunting area are as follows:

A direct commercial flight from Johannesburg to Pemba, Mozambique, operated by S.A Airlink. This is the most convenient and direct route.

From Pemba, a charter flight can be taken to camp. Please contact us for quotes from the charter company, as these may change from year to year.

Alternatively, clients can be driven into camp from Pemba. This will necessitate spending a night in Pemba, so that the vehicle can leave early the following morning. We have a basic beach cottage for clients to stay in while they transit through Pemba. The drive out to camp takes the whole day but gives people a great sense of just how remotely placed this operation is.



CAMPS

With the topography and ecosystems being so diverse, and covering such vast areas, the prevalence of some species is higher than in others. You will be allocated to the area and camp that best fits your trophy requirements.

We have three East African style tented camps along 250 km of very scenic river frontage. The camps are rustic yet comfortably appointed, set amongst the riverine bush of the famed Lugenda river. You can look forward to beautiful views, hot showers en suite, ice cold drinks, wholesome good food, and even better company. We have a full complement of trained, locally sourced staff and laundry is done on a daily basis. There is also a generator in each camp providing 110 - 240 volts electricity.

Furthermore, there is the freedom to fly-camp out after a hard days hunting, camping on the tracks of your quarry, an experience in itself.



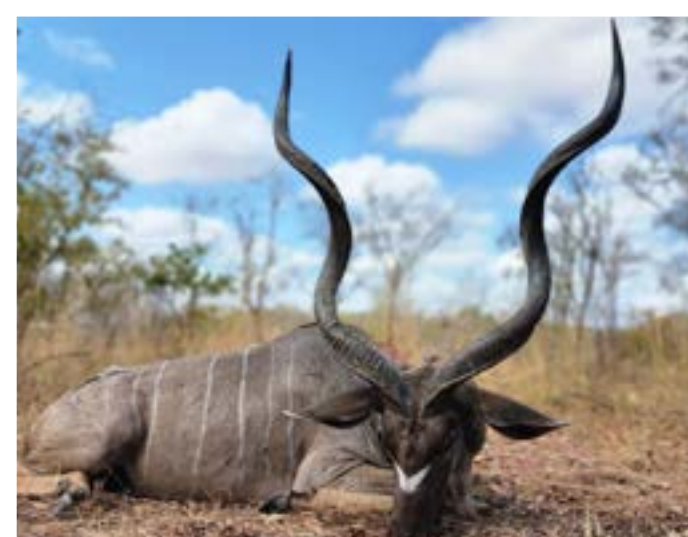
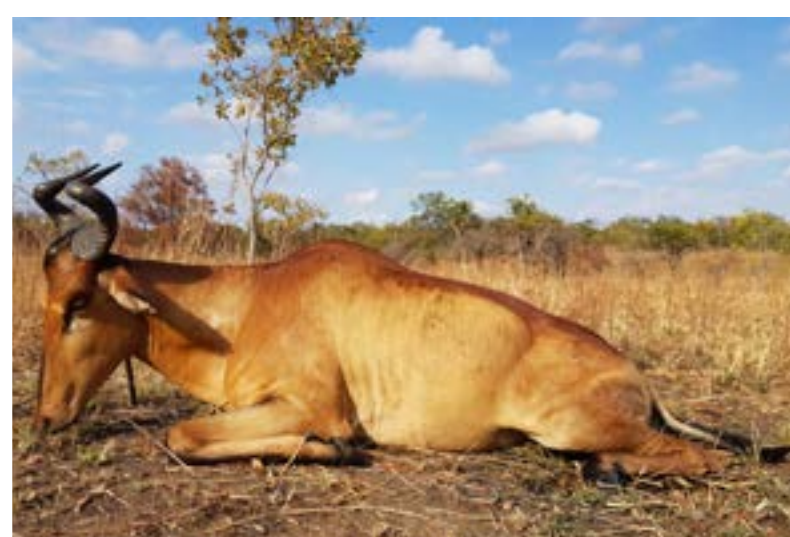


ANTI-POACHING

Wildlife in Africa is under enormous pressure through illegal off-take and human induced habitat loss. As dedicated conservationists, we as hunters understand that it is up to us to do our very best to halt the decline of suitable wildlife habitat and mitigate the scourge of poaching. L7 is dedicated to this vision. They are custodians of millions of acres of African wilderness and wildlife

populations. Their anti-poaching efforts are tireless and unrelenting. They employ members of the local communities as anti-poaching game scouts to patrol the concession and enforce local wildlife and environmental laws. They conduct foot, vehicle and aerial patrols on a regular basis throughout their area of operations.





TROPHY HANDLING

Luwire has experienced skimmers to ensure that trophy handling is done to the highest standard. They also take care of the Niassa National Trophy Audit at the end of each hunting season. Here, the Reserve Warden inspects each trophy and endorses individual hunting licenses. Luwire then ensure safe transport to Lichinga, which is the Provincial Capital of Niassa. Here they are inspected by members of the Department of Tourism, Agriculture and Veterinary Services where they are cleared for transport to Chimoio and the EMIAC depot. EMIAC is responsible for the dip and pack of the trophies, permit procurement and for national paperwork that allows your trophies to leave Mozambique and travel to your respective country.



SUGGESTED PACKING LIST

3 hunting shirts. Some people prefer long sleeves as sun protection.
3 pairs of hunting shorts or trousers if preferred.
Warm fleece or jacket.
Sweater for evening or casual wear.
WELL WORN IN hunting shoes or boots. This is very important.
1 pair of tennis shoes or comfortable light shoes to use in camp.
Wide brimmed hat and ball cap.
Pajamas.
Socks.
Underwear.
Toiletries / personal items.
Flashlight with batteries.
Ammunition belt / cartridge holder.
Binoculars.
Camera.
Sunglasses / prescription eye-wear.
Laundry is done on a daily basis so there is no need to bring excess clothing.
Cat hunter take note: sitting in a blind can be cold. Fleece or wool is best as movement in these do not create noise.

Cat hunters might like to bring extra AA batteries as the trail cameras are power-hungry devices and the batteries can be difficult to source in Mozambique.

Please do not bring light khaki. Browns, greens and grey colours work best. Please do not bring military style camouflage. Mossy Oak, RealTree etc is acceptable.

Our camps are equipped with first aid kits but we still suggest that you bring out any medication recommended by your own doctor. It is highly advisable that you take out emergency medical evacuation cover such as Rip Cord or Global Rescue. In addition we recommend that travel insurance is taken out to cover weapons, equipment and personal effects.

You may also want to include:

Pain / headache medication such as Advil/Tylenol / Ibuprofen.

Anti-itch / antihistamine ointment.

Allergy medication (non-drowsy).

Malaria prophylactics as prescribed by your doctor.

Broad spectrum antibiotic tablets.

Neosporin or other antibiotic ointment.

Antiseptic ointment.

Eye drops.

Sunscreen.

Basic blister and wound dressing, such as band aids and moleskinss.

Personal prescription medication.

Insect repellent. We have found AVON Skin-so-Soft Bug Guard with Picaridin to be most effective against mosquitos, tse-tse flies and other insects.

Vaccinations such as those against tetanus and rabies are prudent, and if transiting through Tanzania, Yellow Fever certificates may be necessary.

WEAPONS

For dangerous game such as buffalo it is necessary to bring a .375 H and H or something in the 400's if you can comfortably and accurately shoot it.

The 300's are great for plains game and leopard. Calibers such as 30.06, .300 Win Mags, .338 are tried and tested favorites. Please bring 180 grain (or heavier if you can find them) for your .300 calibers. The smaller plains game can be taken with the various 7mm (.270, 7 x 57 etc).

For lion and eland, nothing less than a .300 Win Mag should be used.

Your ammunition selection is important! Only use premium ammunition. For soft nose bullets, we have found the Swift A Frame, Barnes X bullets and Federal Trophy Bonded Bear claws work well. In solids, we

recommend Woodleigh, Barnes or Federal Trophy Bonded Sledgehammers.

If your budget allows, a scope with an illuminated reticule works wonders in low light conditions, especially for cat hunting / blinds.

A .375 with .300 grain bullets is a great all-round weapon and will handle your dangerous game and plains game requirements admirably. Please bring a rifle sling for your weapon. Small tool / cleaning kits for scope / rifle maintenance is advisable.

A second scope with tools, rings and mounts is a good idea in case of damage to your primary.

